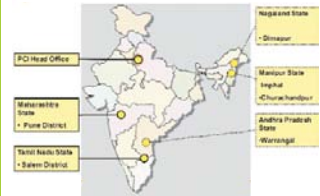


Project Concern International's Community Home Based Care for People Living with HIV/AIDS



To date the project has been able to enroll 10,175 PLHA out of which 4,630 are males and 4,293 are females and 947 are children



India has 2.5 million people living with HIV, which is the largest population of people living with HIV among non-African countries. The epidemic in high prevalence states is likely to grow exponentially in coming years with steady increase of infections in the low prevalence states. The virus is mostly affecting predominantly those who have been marginalized, discriminated or ignored because of their livelihoods, economic status, sex or sexual orientation. India's responses to the epidemic in the last decades

have been focused on mobilizing governments, international agencies and NGOs.

Project Concern International (PCI) has been active in India's HIV/AIDS response since its inception as an Indian Charitable Society in 1997. PCI/India currently addresses HIV/AIDS in five of the six high prevalence states, with programs that span the range of prevention, care, support, and treatment options. During the last decade, PCI/India has successfully managed and implemented more than 25

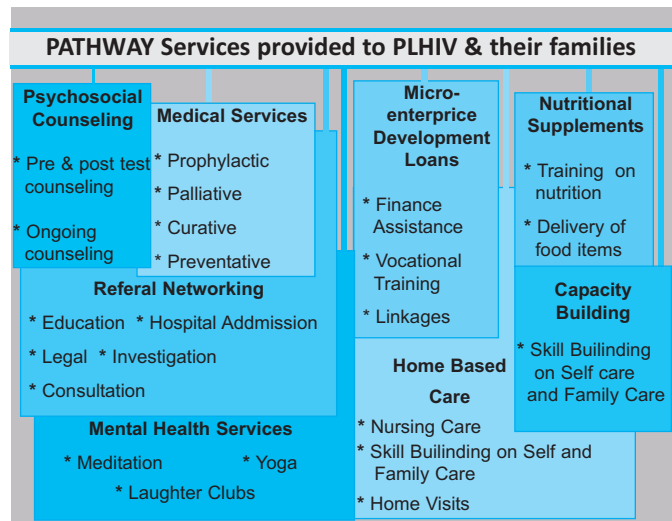
programs that expand HIV/AIDS prevention, care, support, and treatment, particularly among high-risk groups such as truckers, sex workers, intravenous drug users, and vulnerable children. These efforts build networks of people living with HIV (PLHIV) at the local, state and national levels, and strengthen the institutional and technical capacity of NGOs and government organizations working throughout the country to respond to the epidemic.

SURE START Supported by Bill & Melinda Gates Foundation and PATH. PCI/India has been selected as a lead partner for the Sure Start Initiative of February 2007, to improve maternal and newborn health (MNH) in urban sites in Maharashtra. The program is based on concept of "Convergence of MNH and HIV AIDS interventions" as model of practice. The project is a pilot initiative for the MNH care model in the slums of Pune, with a target population of approximately 500,000.

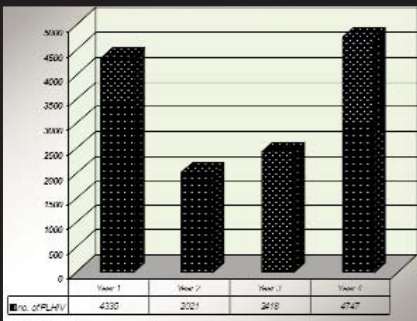
HELP (Health Education and Life Skills Program) is initiated by PCI and Supported by Zensar Foundation is working in 102 schools and 18 colleges of Pune city in Maharashtra. The programme is focussed on imparting Life Skills Education (LSE) sessions in educational institutions and till now 20,797 school students and 25,185 college students have been reached out too. Innovative activities like street plays, poster exhibition, teachers training workshops and interactions with parents are regularly conducted.

- 607 organizations provided with capacity building on program management.
- 12681 PLHA and family members trained on home based care.
- 197 PLHA support groups formed and strengthened.
- 8,230 provided with nutrition support.
- 24,300 provided with Health care services.
- 90,1755 IEC and 1268690 Condoms distributed.

PATHWAY+ (Positive Action for the Health of People Living with HIV/AIDS) program initiated by PCI, is funded under the U.S. Centers for Disease Control and Prevention (CDC) for the period from September 1, 2004 to August 31, 2009, towards implementing "Comprehensive Community and Home-Based Care and Support and HIV prevention for People Living with HIV/AIDS (PLHA) in five high prevalence states of the country : Maharashtra, Tamil Nadu, Andhra Pradesh and north-eastern states of Manipur and Nagaland in India. As one of the most extensive and comprehensive community & home-based care program in India, it targets a total of 1,975,000 people living in the five states. Nearly 50% of the staffs of PATHWAY program is PLHIV Services rendered under PATHWAY.



In Imphal 60% of the PATHWAY staffs are from the PLHIV community. In Churachandpur, 10% of the annual budget is managed by the consortium of Positive people.



5 States, 6 Districts, 2175000 Population, 113 Communities 13521 PLHAs & 4538 Family Members responding to the issues of HIV/AIDS through home based care.